

Waterfall EDGE SHELF

LQS OPEN STORAGE

The LogiQuip® **Waterfall Edge Shelf** features a smooth, rounded edge along the width of the shelf, replacing the traditional raised edge that can damage items as they are moved in and out of storage. These strong and durable shelves come in a variety of sizes, are available in kits and are compatible with LogiQuip 1-inch round **Posts**.

WATERFALL EDGE SHELF DESIGN

Our **Waterfall Edge Design** allows fragile items, like sterile packaging, to slide easily off the edge without the worry of snagging or tearing.

WATERFALL EDGE SHELF KITS

Waterfall Edge Shelf Kits are available in six configurations for turnkey storage options.

CARBON STEEL CORE

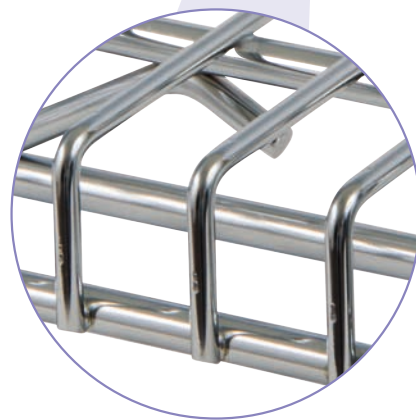
The **Waterfall Shelf**, like all of LogiQuip's **Wire Shelving**, starts with a **Carbon Steel Core**. This helps to ensure a strong, durable base for all of your open storage needs.

DOUBLE CHROME PLATING

Each **Carbon Steel Shelf** is **Double Chrome Plated** for a smooth, bright finish that minimizes damage to stored items.

LIMITED 5-YEAR WARRANTY

LogiQuip products are covered by a **Limited 5-Year Warranty** from date of receipt against defect in materials or workmanship under normal use and service, excluding **Electronic Components, Cart Covers, Custom Products, LogiCell Tambour Doors, Label Holders, and Casters**. During this period, LogiQuip will, in its sole discretion, repair defects in materials or workmanship that existed when the product was received or replace the product. Visit [LogiQuip.com/Warranty](https://www.logiquip.com/Warranty) for more details.



48" WATERFALL SHELF
MODEL # 2448CHWF

LOGIQUIP® WATERFALL SHELF & KIT MODELS

WATERFALL EDGE SHELVES

LogiQuip's Waterfall Edge Shelf design allows fragile items, like sterile packaging, to slide easily off the edge without the worry of snagging or tearing

24" DEEP		
CHROME	D x W - IN.	MAX WT LBS.
2448CHWF	24 x 48	600
2460CHWF	24 x 60	520
2472CHWF	24 x 72	320



MODEL # 2460CHWF

WATERFALL EDGE SHELF KITS

Waterfall Edge Shelf Kits come in a variety of sizes, are available in nine (9) kits. All Kit Models are mobile, have four (4) casters; two (2) swivel/brake, two (2) swivel with four (4) donut bumpers, and a Shelf Cover.

6 SHELF, 69" HIGH		
MODEL	D x W x H - IN.	
MB456CWC-4	2 Flat Shelves, 4 Waterfall Shelves	24 x 48 x 69
MB466CWC-4	2 Flat Shelves, 4 Waterfall Shelves	24 x 60 x 69
MB476CWC-4	2 Flat Shelves, 4 Waterfall Shelves	24 x 72 x 69

6 SHELF, 80" HIGH		
MODEL	D x W x H - IN.	
MB457CWC-4	2 Flat Shelves, 4 Waterfall Shelves	24 x 48 x 80
MB467CWC-4	2 Flat Shelves, 4 Waterfall Shelves	24 x 60 x 80
MB477CWC-4	2 Flat Shelves, 4 Waterfall Shelves	24 x 72 x 80

8 SHELF, 80" HIGH		
MODEL	D x W x H - IN.	
MB457CWC-6	2 Flat Shelves, 6 Waterfall Shelves	24 x 48 x 80
MB467CWC-6	2 Flat Shelves, 6 Waterfall Shelves	24 x 60 x 80
MB477CWC-6	2 Flat Shelves, 6 Waterfall Shelves	24 x 72 x 80



MODEL # MB466CWC-6

LABEL HOLDERS FOR WATERFALL EDGE SHELVING

Waterfall Label Holders are available in three (3) sizes and have a clear front cover with either Clear (CL) or Blue (BL) color support.

WATERFALL EDGE SHELVING LABEL HOLDERS		
BLUE	CLEAR	WIDE
LH48BLWF	LH48CLWF	48"
LH60BLWF	LH60CLWF	60"
LH72BLWF	LH72CLWF	72"



Also available in Clear (CL)