



Medical STORAGE CARTS



WHY LOGIQUIP®?



Healthcare exclusive since 1992, LogiQuip's **Inventory Management Solutions** are designed for Healthcare Professionals looking for a better way to manage supply chain tasks. With **Expert Advice**, **Innovative Solutions**, and **360° Service** that doesn't stop after the sale, LogiQuip's sole purpose is to ensure Healthcare Professionals have the supplies they need when they need them. Partnering with you to design and implement the right solutions, we give you time back to focus on what's important, Patient Care.

EXPERT ADVICE

With an in-depth understanding of the industry and a focus on **Infection Control** and **Lean Processes**, we partner with you to ensure we design the right solutions for you.

INNOVATIVE SOLUTIONS

Designed with an eye on the horizon, LogiQuip has **Innovative Solutions** that evolve with your facility. Our flexible and efficient options help to ensure you have the supplies you need when you need them.

360° SERVICE

LogiQuip's experienced **Sales Representatives** and **Award-Winning Customer Support Team** provide unparalleled service before, during, and after the sale.



LET US DO THE HEAVY LIFTING

WITH LABOR SHORTAGES AND THE EVER-INCREASING DEMAND TO DO MORE WITH LESS, the **LogiQuip Services Team** can help to decrease that burden with turnkey solutions to help ensure you have the supplies you need when you need them.

PROJECT MANAGEMENT

From our initial meeting with you through implementation, a LogiQuip **Services Team Member** will be assigned as your **Project Manager**, working with you every step of the way. Your **Project Manager** will serve as your single point of contact during the project life cycle. Together we will develop and implement project milestones until the work is complete. Contact your **Sales Representative** or call **(800) 665-3760** for more information.

ON-SITE ANALYSIS

Working with your LogiQuip **Representative**, an on-site analysis will be done to ensure that the **Project Manager** has a complete understanding of your current environment. During our on-site analysis we will review your current state, identify gaps, and align on the goals of the project.

PLANNING

Using a mix of innovative products, Lean principles, tried and true methods, and out of the box thinking, LogiQuip will provide a holistic plan with turnkey solutions to minimize downtime while decreasing your storage footprint and increasing PAR levels.

INSTALLATION & CONVERSION

LogiQuip is dedicated to providing on-time delivery, efficient installation, and supply conversion to minimize down time and time on site to get you up and running as quickly as possible.

ONGOING SUPPORT

With the project complete, we want to help you sustain the changes that have been made. With **Annual Inventory Reviews**, **Preventative Maintenance Plans**, and **Field Service** for in warranty and out of warranty repairs, we have you covered to keep things running smoothly.

TABLE OF CONTENTS

TABLE OF CONTENTS

WHY LOGIQUIP®	2
LOGIQUIP SERVICES TEAM	3
MEDICAL STORAGE CARTS	5-8
LAMINATE CARTS + LOCK OPTIONS	7
STAINLESS STEEL CARTS + LOCK OPTIONS.	8
PARWIRE® PRODUCTS	9-11
FINE MESH BASKET SHELVING	9
LABEL HOLDERS	9
FINE MESH & STANDARD DIVIDERS & SUB-DIVIDERS	10
KANBAN DIVIDERS	11
LQS PRODUCTS	12-15
SHELVING & BASKETS	12
LABEL HOLDERS	13
KANBAN DIVIDERS	14-15
ACCESSORIES FOR PARWIRE & LQS	15



LOGIQUIP® MEDICAL STORAGE CARTS

Create a custom, high-density **Storage Cart** that can be used virtually anywhere within your facility. LogiQuip's new secure **Medical Storage Carts** allow you to custom-build your ideal storage solution from the outside in. With multiple sizes, security, and shelving options available, you can build the right product to meet your needs. For additional details visit LogiQuip.com/MedicalStorageCarts or contact your Representative.

FULLY CUSTOMIZABLE

Because every facility is different, LogiQuip's **Medical Storage Carts** are fully customizable beginning with our **Enclosed Carts** in six (6) sizes and three security options. Add our **LQS Flat Wire** and **ParWire® Basket Shelving**, **Dividers**, and **Kanban Dividers** for a tailored and efficient storage solution.

PARWIRE BASKET SHELVING

Increase the capacity of your LogiQuip **Medical Storage Cart** by up to 40%* with our **ParWire Basket Shelving**, **Dividers**, and **Kanban Dividers**. These chrome-plated **Basket Shelves** come in a variety of sizes. Compatible with LogiQuip's 1" round **Posts**, you can use a mix of **ParWire Basket Shelving** and **LQS Wire Shelving** for easy customization.

LQS FLAT WIRE SHELVING

Add LogiQuip's **LQS Flat Wire Shelving** to these **Medical Storage Carts** for an efficient storage option. In addition to saving space, our **LQS Wire Shelving** and **Posts** begin with a carbon steel core that is double chrome plated for strength and durability that lasts.

SECURITY OPTIONS

To maintain secure supplies and patient safety, our **Medical Storage Carts** provide a variety of lock options. Whether you choose **Key Lock**, **eLock**, or **Proximity Lock** you can be sure that stored items will be secure.

STAINLESS STEEL CABINET

An easy-to-clean, corrosion-resistant **Stainless Steel Cabinet** provides strength and durability in the harshest environment.

LIMITED 5-YEAR WARRANTY

LogiQuip products are covered by a **Limited 5-Year Warranty** from date of receipt against defect in materials or workmanship under normal use and service, excluding **Electronic Components**, **Cart Covers**, **Custom Products**, **LogiCell Tambour Doors**, **Label Holders**, and **Casters**. During this period, LogiQuip will, in its sole discretion, repair defects in materials or workmanship that existed when the product was received or replace the product. Visit LogiQuip.com/Warranty for more details.

*Up to 40% space savings when comparing the 2436CH LQS Flat Shelf with two-bin system to PRRG2436 ParWire Basket Shelf with Fine Mesh Dividers.



MODEL # MSC2448HGEL



MODEL # MSC2448HGES

LOGIQUIP® MEDICAL STORAGE CARTS

STURDY, CUSTOMIZED STORAGE

The LogiQuip Medical Storage Carts comes standard with one of three locking options, **270° Hinges**, **Heavy-Duty Handles**, and **Wrap-Around Bumper** creating a sturdy, secure cabinet. Leveraging a mix of **ParWire Basket Shelving** and **LQS Flat Wire Shelving** you can see all of your supplies at a glance.

Shown below: MSC2448HGEL Medical Storage Cabinet with eLock, (1) ParWire Slant Basket Shelf (PRSL2448), (1) LQS Flat Wire Shelf (2448CH), (2) ParWire Basket Shelves (PRRG2448), and (2) ParWire Glide Baskets (PRSO2448).



Scan QR Code to see product details.



BUILD CUSTOMIZED MEDICAL STORAGE CARTS

CHOOSE LAMINATE CART & LOCK OPTION

Build the right **Medical Storage Cart** for you, starting with the **Cart (Laminate)** and lock option. Available in several sizes, these substantial **Carts** come with your choice of **Key Lock**, **eLock**, or **Proximity Lock** to ensure your stored items are secure. Next, chose from our **ParWire® Shelving** or **LQS Flat Wire Shelving** to maximize your storage capacity and several **Accessories** to optimize inventory organization for a truly custom solution.



Key Lock



eLock



Proximity Lock



MODEL # MSC1824HGKL

LAMINATE MEDICAL STORAGE CART + LOCK OPTIONS				
KEYLOCK	ELOCK	PROXIMITY LOCK	DESCRIPTION	D x W x H - IN.
MSC1824HGKL	MSC1824HGEL	MSC1824HGPL	Medical Storage Cart with Glass Doors, Four (4) 5" Swivel Casters - Two (2) with Brake, White Laminate	23.8 x 31.5 x 80.6
MSC1836HGKL	MSC1836HGEL	MSC1836HGPL	Medical Storage Cart with Glass Doors, Five (5) 5" Swivel Casters - Two (2) with Brake, White Laminate	23.8 x 43.5 x 80.6
MSC1848HGKL	MSC1848HGEL	MSC1848HGPL	Medical Storage Cart with Glass Doors, Five (5) 5" Swivel Casters - Two (2) with Brake, White Laminate	23.8 x 55.5 x 80.6
MSC2424HGKL	MSC2424HGEL	MSC2424HGPL	Medical Storage Cart with Glass Doors, Four (4) 5" Swivel Casters - Two (2) with Brake, White Laminate	29.8 x 31.5 x 80.6
MSC2436HGKL	MSC2436HGEL	MSC2436HGPL	Medical Storage Cart with Glass Doors, Five (5) 5" Swivel Casters - Two (2) with Brake, White Laminate	29.8 x 43.5 x 80.6
MSC2448HGKL	MSC2448HGEL	MSC2448HGPL	Medical Storage Cart with Glass Doors, Five (5) 5" Swivel Casters - Two (2) with Brake, White Laminate	29.8 x 55.5 x 80.6
MSC2460HGKL	MSC2460HGEL	MSC2460HGPL	Medical Storage Cart with Glass Doors, Five (5) 5" Swivel Casters - Two (2) with Brake, White Laminate	29.8 x 67.5 x 80.6

For **Stainless Steel Medical Storage Cart** options see page 8.

STAINLESS STEEL CART + LOCK OPTIONS

CHOOSE STAINLESS CART & LOCK OPTION

LogiQuip Stainless Steel Medical Storage Carts are easy to clean and fully customizable. As with our **Laminate Cabinets**, these can be filled with **ParWire Basket Shelving** and **Flat Wire Shelving**, and can be secured with an **eLock** or **Key Lock** for safe storage.



Key Lock



eLock



MODEL # MSC2448HGES

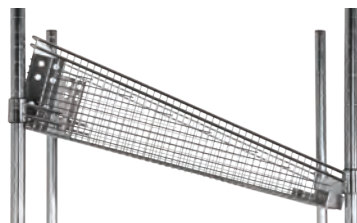
STAINLESS STEEL MEDICAL STORAGE CART + LOCK OPTIONS			
KEYLOCK	ELOCK	DESCRIPTION	D x W x H - IN.
MSC1824HGKS	MSC1824HGES	Medical Storage Cart with Glass Doors, Four (4) 5" Swivel Casters - Two (2) with Brake, Stainless	23.8 x 31.5 x 80.6
MSC1836HGKS	MSC1836HGES	Medical Storage Cart with Glass Doors, Five (5) 5" Swivel Casters - Two (2) with Brake, Stainless	23.8 x 43.5 x 80.6
MSC1848HGKS	MSC1848HGES	Medical Storage Cart with Glass Doors, Five (5) 5" Swivel Casters - Two (2) with Brake, Stainless	23.8 x 55.5 x 80.6
MSC2424HGKS	MSC2424HGES	Medical Storage Cart with Glass Doors, Four (4) 5" Swivel Casters - Two (2) with Brake, Stainless	29.8 x 31.5 x 80.6
MSC2436HGKS	MSC2436HGES	Medical Storage Cart with Glass Doors, Five (5) 5" Swivel Casters - Two (2) with Brake, Stainless	29.8 x 43.5 x 80.6
MSC2448HGKS	MSC2448HGES	Medical Storage Cart with Glass Doors, Five (5) 5" Swivel Casters - Two (2) with Brake, Stainless	29.8 x 55.5 x 80.6

ADD PARWIRE FINE MESH BASKET SHELVING & LABEL HOLDERS

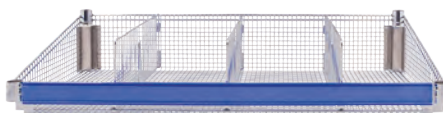
All of LogiQuip's Standard (LQS) Wire and ParWire® Basket Shelving begins with a carbon steel core that is double chrome plated for strength and durability that lasts. All LQS and ParWire Basket Shelving options are compatible with our 1" Posts, so you can use any combination of Shelving to create your ideal solution.

CHOOSE PARWIRE BASKET SHELVING

The ParWire Fine Mesh Basket Shelves, Dividers, and our patented Kanban Dividers help to increase storage by up to 40% by eliminating the need for the traditional plastic Two-Bin System. This design also allows for storage of even your smallest items and is available in STANDARD, SLANTED or GLIDE options.



MODEL # PRSL1824



MODEL # PRRG1824



MODEL # PRSO1848

SLANTED BASKETS *		
MODEL	D x W x H - IN.	
PRSL1824	18 x 24 x 6.25	
PRSL1836	18 x 36 x 6.25	
PRSL1848	18 x 48 x 6.25	
PRSL2424	24 x 24 x 6.25	
PRSL2436	24 x 36 x 6.25	
PRSL2448	24 x 48 x 6.25	
PRSL2460	24 x 60 x 6.25	

* Baskets are slanted at 15 degrees. **Weight Max** is 75 pounds.

STANDARD BASKETS		
MODEL	D x W x H - IN.	WT MAX
PRRG1824	18 x 24 x 7	125 lbs.
PRRG1836	18 x 36 x 7	125 lbs.
PRRG1848	18 x 48 x 7	75 lbs.
PRRG2424	24 x 24 x 7	125 lbs.
PRRG2436	24 x 36 x 7	125 lbs.
PRRG2448	24 x 48 x 7	75 lbs.
PRRG2460	24 x 60 x 7	50 lbs.

GLIDE BASKETS*		
MODEL	D x W x H - IN.	
PRSO1836	18 x 36 x 6.25	
PRSO1848	18 x 48 x 6.25	
PRSO2424	24 x 24 x 6.25	
PRSO2436	24 x 36 x 6.25	
PRSO2448	24 x 48 x 6.25	
PRSO2460	24 x 60 x 6.25	

*Weight Max is 50 pounds. Not for use in mobile applications. A maximum of four (4) ParWire Glide Baskets can be used in one cart.

ADD LABEL HOLDERS FOR FINE MESH

Label Holders for ParWire are available in multiple sizes and two colors; Clear (CL) or Blue (BL).

PARWIRE LABEL HOLDERS	
MODEL	WIDE
LH24BLPRSB	24"
LH24CLPRSB	24"
LH36BLPRSB	36"
LH36CLPRSB	36"
LH48BLPRSB	48"
LH48CLPRSB	48"
LH60BLPRSB	60"
LH60CLPRSB	60"

PARWIRE GLIDE BASKET LABEL HOLDERS	
MODEL	WIDE
LH36BLSO	36"
LH36CLSO	36"
LH48BLSO	48"
LH48CLSO	48"
LH60BLSO	60"
LH60CLSO	60"



BLUE



CLEAR

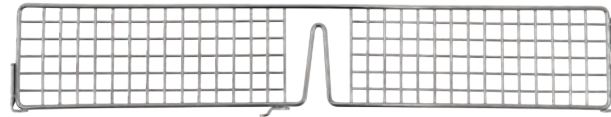
ADD PARWIRE DIVIDERS & SUB-DIVIDERS

ADD FINE MESH & STANDARD DIVIDERS

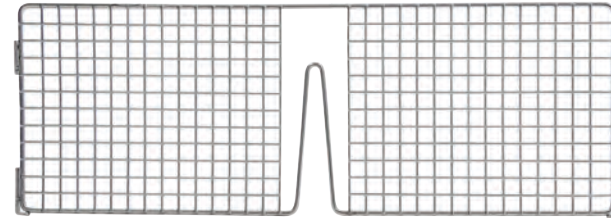
Create custom column sizes within **Basket Shelves** with our **Standard** and **Fine Mesh Dividers**. These chrome plated **Dividers** come in 12", 18", and 24" wide models. **NOTE:** 12" **Dividers** can ONLY be used on **ParWall®**. The 18" **Dividers** can be used on both **ParWire®** and **ParWall**. The 24" **Dividers** can ONLY be used on **ParWire**.

FINE MESH DIVIDERS*	
MODEL	W x H - IN.
DVW123FMPF	12 x 3
DVW126FMPF	12 x 6
DVW183FMPF	18 x 3
DVW186FMPF	18 x 6
DVW246FMPF	24 x 6

*Contact Customer Support for additional divider sizes

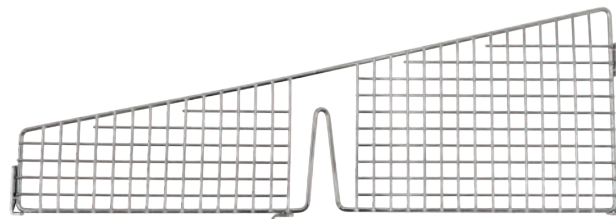


MODEL # DVW183FMPF



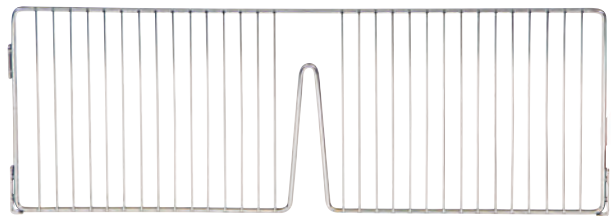
MODEL # DVW186FMPF

FINE MESH SLANTED DIVIDER	
MODEL	W x H - IN.
DVW126FMPF-SL	12 x 6
DVW186FMPF-SL	18 x 6
DVW246FMPF-SL	24 x 6



MODEL # DVW186FMPF-SL

STANDARD DIVIDERS	
MODEL	W x H - IN.
DVW126-2	12 x 6
DVW186-2	18 x 6
DVW246-2	24 x 6



MODEL # DVW186-2

ADD FINE MESH & STANDARD SUB-DIVIDERS

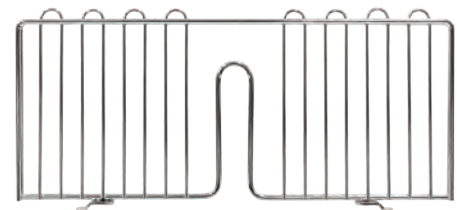
Leverage **Fine Mesh** and **Standard Sub-Dividers** to create multiple "bins" within each column with using traditional **Bins**.

FINE MESH SUB-DIVIDERS	
MODEL	W x H - IN.
DVW33FMPF	3 x 3



MODEL # DVW33FMPF

STANDARD SUB-DIVIDERS	
MODEL	W x H - IN.
DVW44PF	4 x 4
DVW63PF	6 x 3
DVW64PF	6 x 4
DVW66PF	6 x 6
DVW104PF	10 x 4
DVW184PF	18 x 4



MODEL # DVW184PF

ADD KANBAN DIVIDERS TO PARWIRE

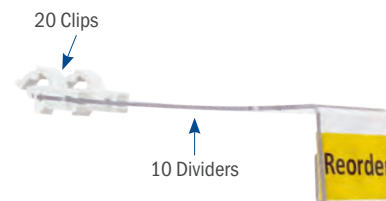
The LogiQuip® patented **Kanban Divider System** creates a **Kanban Trigger** when the caregiver accesses the safety stock by lowering the **Kanban Divider**, creating a visual cue to order more supplies. Available in 7" or 8.5" depths, our **Kanban Dividers** can be used with any of LogiQuip's **Fine Mesh Basket** products.

KANBAN DIVIDERS FOR PARWIRE

- The label face is 1.5" high
- Use the 7" deep **Dividers** for 12" and 18" deep **Fine Mesh Basket Shelving**
- Use the 8.5" deep **Dividers** for 24" deep **Fine Mesh Basket Shelving**
- Available as singles or in packs of 10



MODEL # DVKB127-1



MODEL # DVKB27-10
(Pack of 10)

10-PACK KANBAN DIVIDERS WITH CLIPS		
MODEL	DESCRIPTION	W x D x H - IN.
DVKB27-10	Includes (10) Dividers, (20) Clips	1.75 x 7 x 1.5
DVKB37-10	Includes (10) Dividers, (20) Clips	2.75 x 7 x 1.5
DVKB39-10	Includes (10) Dividers, (20) Clips	2.75 x 8.5 x 1.5
DVKB47-10	Includes (10) Dividers, (20) Clips	3.75 x 7 x 1.5
DVKB49-10	Includes (10) Dividers, (20) Clips	3.75 x 8.5 x 1.5
DVKB67-10	Includes (10) Dividers, (20) Clips	5.75 x 7 x 1.5
DVKB69-10	Includes (10) Dividers, (20) Clips	5.75 x 8.5 x 1.5
DVKB97-10	Includes (10) Dividers, (20) Clips	8.75 x 7 x 1.5
DVKB99-10	Includes (10) Dividers, (20) Clips	8.75 x 8.5 x 1.5
DVKB127-10	Includes (10) Dividers, (20) Clips	11.75 x 7 x 1.5
DVKB129-10	Includes (10) Dividers, (20) Clips	11.75 x 8.5 x 1.5
DVKB187-10	Includes (10) Dividers, (30) Clips	17.75 x 7 x 1.5
DVKB189-10	Includes (10) Dividers, (30) Clips	17.75 x 8.5 x 1.5
DVKB207-10	Includes (10) Dividers, (30) Clips	20 x 7 x 1.5
DVKB209-10	Includes (10) Dividers, (30) Clips	20 x 8.5 x 1.5
DVKB247-10	Includes (10) Dividers, (40) Clips	24 x 7 x 1.5
DVKB249-10	Includes (10) Dividers, (40) Clips	24 x 8.5 x 1.5
DVKB357-10	Includes (10) Dividers, (40) Clips	35 x 7 x 1.5
DVKB359-10	Includes (10) Dividers, (40) Clips	35 x 8.5 x 1.5

KANBAN DIVIDER WITH CLIPS		
MODEL	DESCRIPTION	W x D x H - IN.
DVKB27-1	Includes (1) Divider, (2) Clips	1.75 x 7 x 1.5
DVKB37-1	Includes (1) Divider, (2) Clips	2.75 x 7 x 1.5
DVKB39-1	Includes (1) Divider, (2) Clips	2.75 x 8.5 x 1.5
DVKB47-1	Includes (1) Divider, (2) Clips	3.75 x 7 x 1.5
DVKB49-1	Includes (1) Divider, (2) Clips	3.75 x 8.5 x 1.5
DVKB67-1	Includes (1) Divider, (2) Clips	5.75 x 7 x 1.5
DVKB69-1	Includes (1) Divider, (2) Clips	5.75 x 8.5 x 1.5
DVKB97-1	Includes (1) Divider, (2) Clips	8.75 x 7 x 1.5
DVKB99-1	Includes (1) Divider, (2) Clips	8.75 x 8.5 x 1.5
DVKB127-1	Includes (1) Divider, (2) Clips	11.75 x 7 x 1.5
DVKB129-1	Includes (1) Divider, (2) Clips	11.75 x 8.5 x 1.5
DVKB187-1	Includes (1) Divider, (3) Clips	17.75 x 7 x 1.5
DVKB189-1	Includes (1) Divider, (3) Clips	17.75 x 8.5 x 1.5
DVKB207-1	Includes (1) Divider, (3) Clips	20 x 7 x 1.5
DVKB209-1	Includes (1) Divider, (3) Clips	20 x 8.5 x 1.5
DVKB247-1	Includes (1) Divider, (4) Clips	24 x 7 x 1.5
DVKB249-1	Includes (1) Divider, (4) Clips	24 x 8.5 x 1.5
DVKB357-1	Includes (1) Divider, (4) Clips	35 x 7 x 1.5
DVKB359-1	Includes (1) Divider, (4) Clips	35 x 8.5 x 1.5

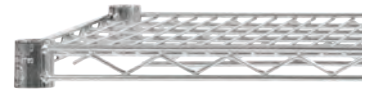
ADD LQS SHELVEING & BASKETS

CHOOSE LQS SHELVEING & BASKETS

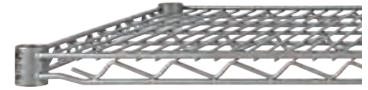
Select from four (4) LogiQuip **LQS Shelving** options; **Flat Wire Shelving**, **Solid Shelving**, **Waterfall Edge Shelving**, and **Wire Basket Shelving**. All **LQS Shelving** options attach to our 1" **Posts**, so you can use any combination to create your ideal storage solution.

LQS WIRE SHELVES

LogiQuip® **Wire Shelves** are adjustable on 1" increments and come in a variety of sizes to suit every application. Each **Shelf** comes with four (4) **Split Sleeves** to attach the **Shelf** to the **Post**.



Wire Shelf (Chrome)



Wire Shelf (Epoxy Coated)

18" DEEP				
CHROME	EPOXY COATED	STAINLESS	D x W - IN.	MAX WT LBS.
1824CH	1824WES	1824SW	18 x 24	800
1836CH	1836WES	1836SW	18 x 36	800
1848CH	1848WES	1848SW	18 x 48	800
1860CH	1860WES	1860SW	18 x 60	600

24" DEEP				
CHROME	EPOXY COATED	STAINLESS	D x W - IN.	MAX WT LBS.
2424CH	2424WES	2424SW	24 x 24	800
2436CH	2436WES	2436SW	24 x 36	800
2448CH	2448WES	2448SW	24 x 48	800
2460CH	2460WES	2460SW	24 x 60	600

SOLID SHELVES

Solid Shelves are available in 24" deep in both **Stainless Steel** and **Galvanized Steel**.

24" DEEP			
STAINLESS	GALVANIZED	D x W - IN	MAX WT LBS.
2424SS	2424GS	24 x 24	800
2436SS	2436GS	24 x 36	800
2448SS	2448GS	24 x 48	800
2460SS	2460GS	24 x 60	600

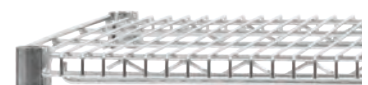
WATERFALL EDGE SHELVES

LogiQuip's **Waterfall Edge Shelf** design allows fragile items, like sterile packaging, to slide easily off the edge without the worry of snagging or tearing

24" DEEP		
CHROME	D x W - IN.	MAX WT LBS.
2448CHWF	24 x 48	600
2460CHWF	24 x 60	520



Solid Shelf



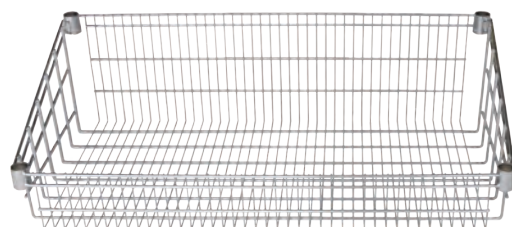
Waterfall Edge Shelf

WIRE BASKETS

Choose from 18" or 24" deep **LQS Wire Baskets** for a higher capacity storage option than the traditional flat shelf.

18" DEEP		
MODEL	DESCRIPTION	D x W x H - IN.
SB2024CH	24" Wire Basket	18 x 24 x 10
SB2036CH	36" Wire Basket	18 x 36 x 10
SB2048CH	48" Wire Basket	18 x 48 x 10

24" DEEP		
MODEL	DESCRIPTION	D x W x H - IN.
SB2424CH	24" Wire Basket	24 x 24 x 10
SB2436CH	36" Wire Basket	24 x 36 x 10
SB2448CH	48" Wire Basket	24 x 48 x 10
SB2460CH	60" Wire Basket	24 x 60 x 10



MODEL#
SB2436CH

ADD LQS LABEL HOLDERS

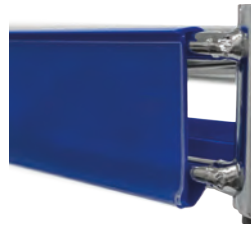
LABEL HOLDERS FOR LQS WIRE SHELVING

LQS Wire Shelving Label Holders can be installed in three (3) positions; flat, a 10° angle, or a 30° angle. These Label Holders have a clear front cover with either **Clear (CL)** or **Blue (BL)** color support.

LQS WIRE SHELVING LABEL HOLDERS		
BLUE	CLEAR	WIDE
LH03BL	LH03CL	3"
LH24BL	LH24CL	24"
LH30BL	LH30CL	30"
LH36BL	LH36CL	36"
LH42BL	LH42CL	42"
LH48BL	LH48CL	48"
LH54BL	LH54CL	54"
LH60BL	LH60CL	60"



Clear Label



Blue Label Flat



Blue Label 10° Angle



Blue Label 30° Angle

LABEL HOLDER FOR LQS WIRE BASKETS

Label Holders for LQS Wire Baskets are available in four (4) sizes and two colors; **Clear (CL)** or **Blue (BL)**.

LQS WIRE BASKET LABEL HOLDERS		
BLUE	CLEAR	WIDE
LH24BLPRSB	LH24CLPRSB	24"
LH36BLPRSB	LH36CLPRSB	36"
LH48BLPRSB	LH48CLPRSB	48"
LH60BLPRSB	LH60CLPRSB	60"



Blue Label

LABEL HOLDER FOR WATERFALL EDGE SHELVING

Label Holders for Waterfall Edge Shelves are available in three (3) sizes and two colors; **Clear (CL)** or **Blue (BL)**.

WATERFALL EDGE SHELVING LABEL HOLDERS		
MODEL	DESCRIPTION	WIDE
LH48BLWF	Blue Waterfall Shelf Label Holder	48"
LH48CLWF	Clear Waterfall Shelf Label Holder	48"
LH60BLWF	Blue Waterfall Shelf Label Holder	60"
LH60CLWF	Clear Waterfall Shelf Label Holder	60"



Blue Label
(Also Available in Clear - CL)

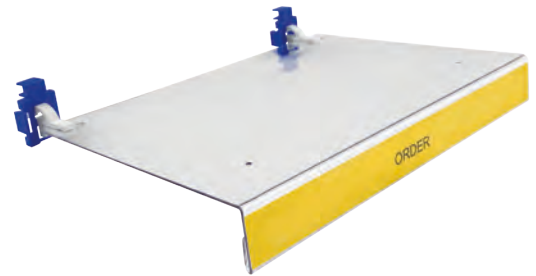
ADD KANBAN DIVIDERS TO LQS

The LogiQuip® patented **Kanban Divider System** creates a **Kanban Trigger** when the caregiver accesses the safety stock by lowering the **Kanban Divider**, creating a visual cue to order more supplies. Available in 7" or 8.5" depths, our **Kanban Dividers** can be used with our **LQS Flat Wire Shelves**, and **Waterfall Edge Shelves**. Use the **Kanban Adaptor** to attach the **Kanban Divider** to **LQS Flat Wire** or **Waterfall Edge Shelving**.

KANBAN DIVIDERS FOR LQS WIRE & WATERFALL EDGE SHELVING

- The label face is 1.5" high by the width of the **Divider** (see chart below)
- Use the 7" deep **Dividers** for 12" and 18" deep **Fine Mesh Basket Shelving** and 18" and 24" **LQS Flat Wire** and **Waterfall Edge Shelving**.
- Use the 8.5" deep **Dividers** for 24" deep **Fine Mesh Basket**, **LQS Flat Wire**, and **Waterfall Edge Shelving**
- Available as singles or in packs of 10

KANBAN DIVIDER WITH CLIPS AND ADAPTORS		
MODEL	DESCRIPTION	W x D x H - IN.
DVKB67-1B	Includes (1) Divider, (2) Clips, (2) Adaptors	5.75 x 7 x 1.5
DVKB69-1B	Includes (1) Divider, (2) Clips, (2) Adaptors	5.75 x 8.5 x 1.5
DVKB97-1B	Includes (1) Divider, (2) Clips, (2) Adaptors	8.75 x 7 x 1.5
DVKB99-1B	Includes (1) Divider, (2) Clips, (2) Adaptors	8.75 x 8.5 x 1.5
DVKB127-1B	Includes (1) Divider, (2) Clips, (2) Adaptors	11.75 x 7 x 1.5
DVKB129-1B	Includes (1) Divider, (2) Clips, (2) Adaptors	11.75 x 8.5 x 1.5
DVKB187-1B	Includes (1) Divider, (3) Clips, (3) Adaptors	17.75 x 7 x 1.5
DVKB189-1B	Includes (1) Divider, (3) Clips, (3) Adaptors	17.75 x 8.5 x 1.5
DVKB207-1B	Includes (1) Divider, (3) Clips, (3) Adaptors	20 x 7 x 1.5
DVKB209-1B	Includes (1) Divider, (3) Clips, (3) Adaptors	20 x 8.5 x 1.5
DVKB247-1B	Includes (1) Divider, (4) Clips, (4) Adaptors	24 x 7 x 1.5
DVKB249-1B	Includes (1) Divider, (4) Clips, (4) Adaptors	24 x 8.5 x 1.5
DVKB357-1B	Includes (1) Divider, (4) Clips, (4) Adaptors	35 x 7 x 1.5
DVKB359-1B	Includes (1) Divider, (4) Clips, (4) Adaptors	35 x 8.5 x 1.5

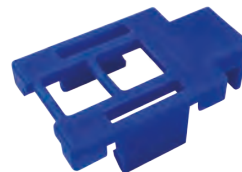


MODEL #
DVKB127-1B

KANBAN ADAPTOR FOR LQS

The patented **Kanban Adaptor** allows the **Kanban Divider** to attach to **LQS Flat Wire** and **Waterfall Edge Shelving**.

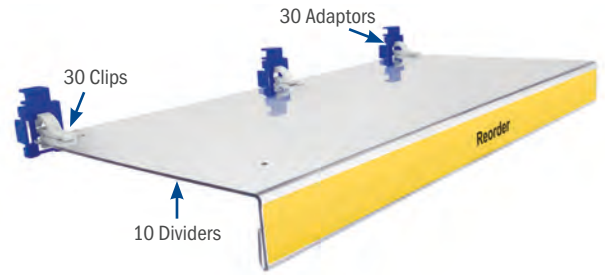
KANBAN ADAPTOR
MODEL
DVKBADAPTOR



ADD KANBAN DIVIDERS TO LQS

10-PACK KANBAN DIVIDERS WITH CLIPS AND ADAPTORS

MODEL	DESCRIPTION	W x D x H - IN.
DVKB67-10B	Includes (10) Dividers, (20) Clips, (20) Adaptors	5.75 x 7 x 1.5
DVKB69-10B	Includes (10) Dividers, (20) Clips, (20) Adaptors	5.75 x 8.5 x 1.5
DVKB97-10B	Includes (10) Dividers, (20) Clips, (20) Adaptors	8.75 x 7 x 1.5
DVKB99-10B	Includes (10) Dividers, (20) Clips, (20) Adaptors	8.75 x 8.5 x 1.5
DVKB127-10B	Includes (10) Dividers, (20) Clips, (20) Adaptors	11.75 x 7 x 1.5
DVKB129-10B	Includes (10) Dividers, (20) Clips, (20) Adaptors	11.75 x 8.5 x 1.5
DVKB187-10B	Includes (10) Dividers, (30) Clips, (30) Adaptors	17.75 x 7 x 1.5
DVKB189-10B	Includes (10) Dividers, (30) Clips, (30) Adaptors	17.75 x 8.5 x 1.5
DVKB207-10B	Includes (10) Dividers, (30) Clips, (30) Adaptors	20 x 7 x 1.5
DVKB209-10B	Includes (10) Dividers, (30) Clips, (30) Adaptors	20 x 8.5 x 1.5
DVKB247-10B	Includes (10) Dividers, (40) Clips, (40) Adaptors	24 x 7 x 1.5
DVKB249-10B	Includes (10) Dividers, (40) Clips, (40) Adaptors	24 x 8.5 x 1.5
DVKB357-10B	Includes (10) Dividers, (40) Clips, (40) Adaptors	35 x 7 x 1.5
DVKB359-10B	Includes (10) Dividers, (40) Clips, (40) Adaptors	35 x 8.5 x 1.5



MODEL # DVKB209-10B
(Pack of 10)

ACCESSORIES FOR PARWIRE & LQS

3-INCH LABEL HOLDERS

Compatible with our **ParWire®**, **ParWall®**, **ParStor®**, **LogiCell®**, and **LQS Wire Shelving**, our variety of **3-Inch Label Holder** colors aid in color coding inventory, making supplies easier to find. These 1" W x 3" H **Label Holders** include a loop for attaching to **Shelves** or **Baskets**, come in bags of 50, and can be used on **ParWire Basket Shelving** and **LQS Shelving**. Choose from 8 colors; Blue, Red, Pink, Yellow, Orange, Green, Purple, and Opaque.



MODEL# LH3-BLUE



(Actual color may vary, depending on your monitor setting or press run.)

3-INCH LABEL HOLDERS

MODEL	COLOR
LH3-BLUE	Blue
LH3-RED	Red
LH3-PINK	Pink
LH3-YELLOW	Yellow
LH3-ORANGE	Orange
LH3-GREEN	Green
LH3-PURPLE	Purple
LH3	Opaque



www.logiquip.com

(800) 665-3760 | customersupport@logiquip.net

9.2023