



USER GUIDE



LOGICELL[®] CARTS SYSTEMS



Read and understand all of the instructions and safety information in this document before operating this product.

SAVE THESE INSTRUCTIONS

TABLE OF CONTENTS

LOGICELL® CARTS	3
UNPACKING INSTRUCTIONS	4
UNLOCKING INSTRUCTIONS.	5
CLEANING INSTRUCTIONS, PRODUCTS & PROCEDURES	6
ACCESSORIES.	7-8
WARRANTY INFORMATION	8

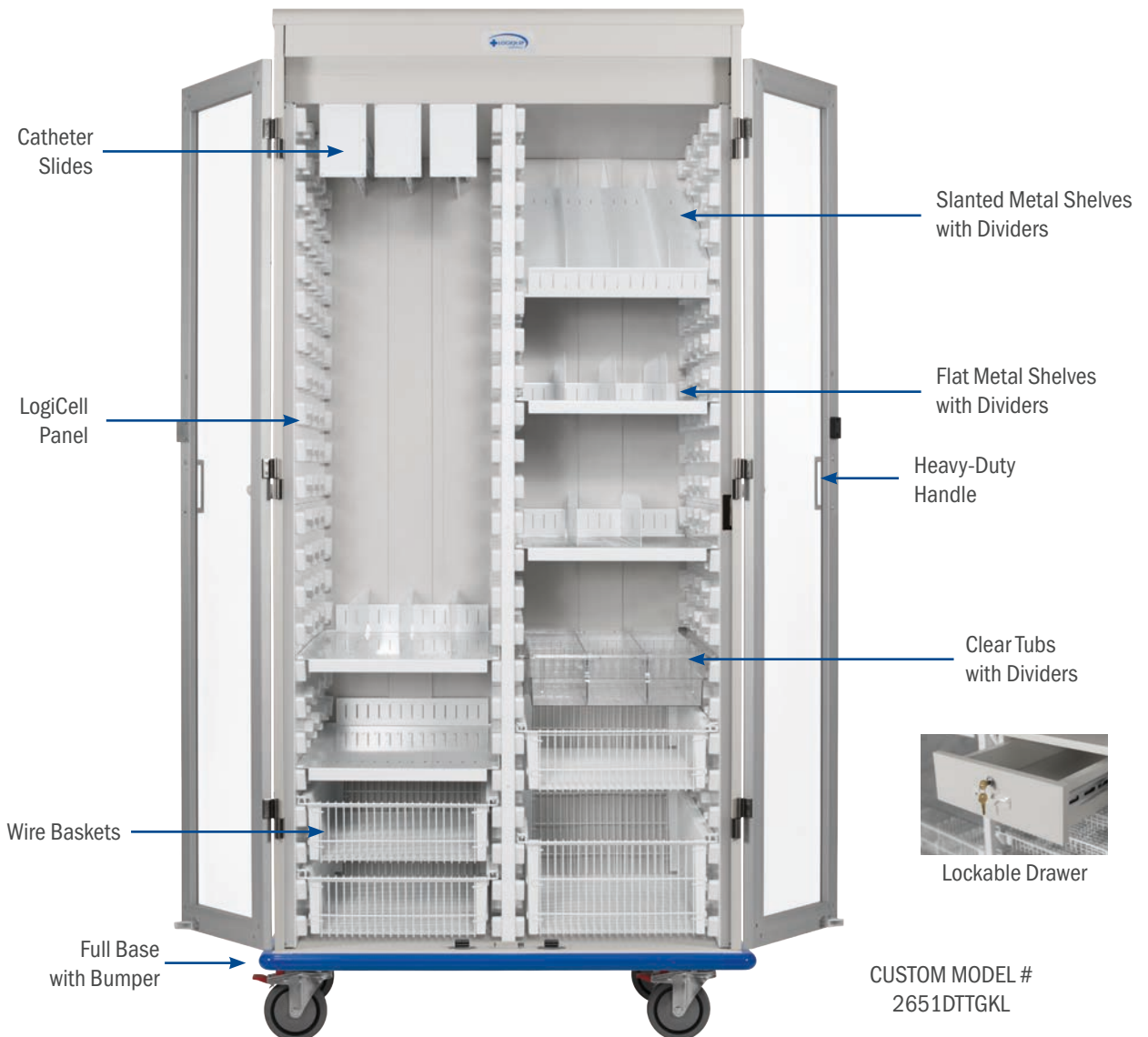
LOGICELL® CARTS

COME STANDARD WITH:

- Coated Steel Cabinet
- LogjCell Panels
- Key Lock or Electronic Key Lock
- Doors (Tambour or Glass)
- Full Base with Bumper (select models)
- Heavy-Duty Handle (select models)
- Four (4) Casters – two (2) swivel and two (2) swivel/brake

OPTIONAL ACCESSORIES:

- Clear Tubs & Dividers – 2”, 4”, and 8”
- Wire Baskets & Dividers – 2”, 5”, and 8”
- Flat Metal Shelves & Dividers
- Slanted Metal Shelves & Dividers
- Catheter Slides – 6 Hook and 9 Hook
- Catheter Boxes
- Lockable Drawers



UNPACKING INSTRUCTIONS

All LogiCell® Carts go through a 12-Step Quality Check process before shipping. Upon arrival, please follow the below instructions for Receiving and Unpacking your new LogiCell Carts.

INSPECTION:

- Receiving area must meet all State and Local regulations prior to unpacking
- Customer must inspect both the skid and Cart before and after unpacking to determine if any items were damaged during shipping
- All damaged items must be listed on the Bill of Lading
- Customer is responsible for the proper disposal of all packing materials; the disposal of these items must meet all State and Local regulations

UNPACKING LOGICELL® CARTS

LogiCell Carts are shipped on well-constructed wooden skids. Two (2) steel bands secure the product(s) to the skid. The surfaces of the Carts are protected by layers of plastic wrapping (Fig. 1). Care must be taken while unpacking the items to avoid damage. Do not drop tools on the Carts or scratch the surfaces with sharp edges. Retain all shipping materials until the items are completely unpacked and inspected for damage.

IMPORTANT: Wear gloves and eyewear during the unpacking process.

- Use tin snips to cut the metal bands holding the Cart to the wooden skid (Fig. 2)
- Remove metal staples holding one end of the packing carton together
- Remove Packing Slip from Protective Wrap for receiving purpose
- Remove Protective Wrap with utility knife from around cart
NOTE: If using a utility knife, be careful to avoid scratching the cart
- Remove foam blocks from between casters (Fig. 3)
- If you have received Glass Door Models, remove the shipping foam from between the doors
- Set provided Ramp down with tallest edge flush to the pallet (Fig. 4)
- Carefully roll cart down ramp; do not lift by the handles (Fig. 5)
- Discard shipping and packing materials in compliance with state and local regulations
- LogiCell Carts must NEVER be double stacked



Fig. 1



Fig. 2



Fig. 3

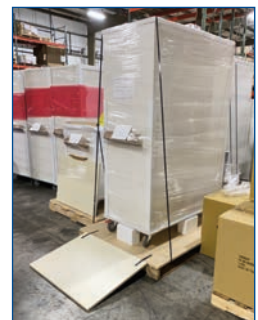


Fig. 4



Fig. 5



CAUTION: If using a utility knife to remove plastic wrap, be careful not to scratch the cart.

UNLOCKING YOUR NEW LOGICELL® CART

KEY LOCK

LogiCell Key Lock Carts are shipped unlocked. Keys can be found in your Welcome Packet located inside your LogiCell Cart..

eLOCK

The eLock system on your LogiCell Carts has a 10 button keypad with a # button located behind the lever when in the locked position. This keypad comes with a preset access code (2244) and preset master code (11335577).

ACCESS eLOCK

To access your eLock LogiCell Cart for the first time, simply punch in 2244 and turn the lever to the right.

TO CHANGE eLOCK ACCESS CODE

- Open Lock using Access Code 2244
- Enter #11335577
- Enter 02
- Enter NEW Access Code (New Master Code is 4 digits)

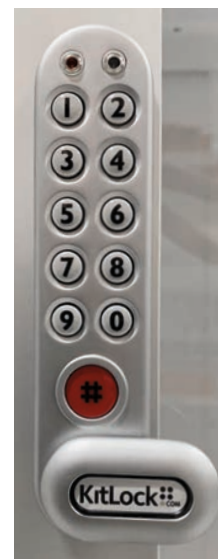
TO CHANGE eLOCK MASTER CODE

- Open Lock using Master Code 11335577
- Enter #11335577
- Enter 01
- Enter NEW Master Code (New Master Code is 8 digits)
- Enter NEW Master Code AGAIN

NOTE: Make sure to document your new eLock Access and/or Master Codes in a secure location.



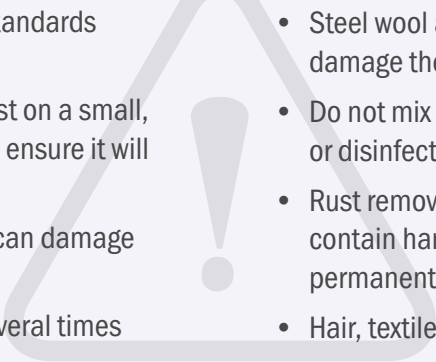
LOCKED



UNLOCKED

LOGICELL® CLEANING INSTRUCTIONS

WARNING

- 
- Always comply with facility cleaning standards and guidelines*.
 - Before using any cleaner, do a spot test on a small, inconspicuous area of your product to ensure it will not cause damage to the finish.
 - Solvents, acidic or abrasive cleaners can damage surfaces and are not recommended.
 - Wipe spill away promptly and rinse several times with water.
 - Steel wool and other abrasive cleaning pads will damage the surface.
 - Do not mix different cleaning agents to clean or disinfect.
 - Rust remover, drain cleaners and toilet bowl cleaners contain harsh chemicals and will quickly cause permanent damage.
 - Hair, textile and food dyes can cause permanent stains.

*For additional information please refer to the CDC cleaning and disinfection protocols.

RECOMMENDED CLEANING PRODUCTS

Soap and water and most common cleaners/disinfectants are excellent for most cleaning and disinfecting purposes as long as the directions on the label are followed.

The following cleaning products are acceptable when used according to directions:

- AHP Accel® TB
- Bleach Mixture (1/3 cup bleach per 1 gallon of water)
- Dispatch® Hospital Cleaner Disinfectant
- Diversey™ Oxivir® Tb Wipes
- Hydrogen Peroxide
- Isopropyl Alcohol
- Metrex™ CaviWipes™
- Oxivir® Tb
- Quaternary Cleaners
- Sani-Cloth® AF3
- Sani-Cloth® HB
- Sanimaster™ 6
- Super Sani-Cloth®

RECOMMENDED CLEANING PROCEDURES

- 1 Remove debris before application of the cleaner/disinfectant.
- 2 Apply cleaner/disinfectant according to the label. Avoid using sprays on products with electronic components.
- 3 Ensure that the solution is wiped away with a clean cloth. Do not allow the cleaner to remain on product longer than the time recommended on the label.
- 4 When solutions are NOT contained in a spray bottle make sure to appropriately dispose of the solution, cleaning cloth and cleaning supplies after each cleaning.

LOGICELL® ACCESSORIES

LogiCell's unique Wall Panel design allows Bins, Wire Baskets, and Shelves to be placed in straight or at an angle, making the LogiCell System incredibly efficient. In addition, Bins, Wire Baskets, and Shelves can be extended 80% for maximum visibility of supplies.

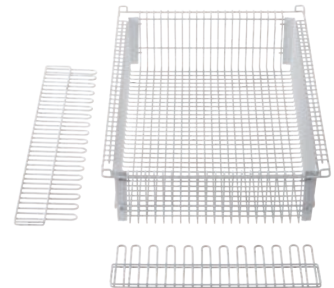
CLEAR TUBS & DIVIDERS + KITS

These Polycarbonate (PC) Clear Tubs for LogiCell have an exterior dimension of 24" D x 15" W, and are used to store smaller items or supplies that could leak or spill. Each Tub includes two (2) safety stops and can be used with standard and wide units. The Clear Dividers can be installed to segment the Tub for optimization of organization.



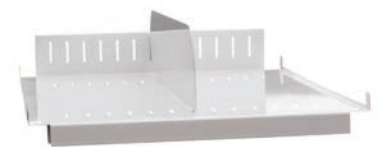
WIRE BASKETS & DIVIDERS + KITS

LogiQuip's white epoxy coated steel Wire Baskets for LogiCell have an exterior dimension of 23.6" D x 15.75" W. They are used to store smaller items or supplies that could leak or spill. Each Wire Basket includes two (2) built-in safety stops and can be used with standard and wide units. Dividers are sold individually or included in the kits to segment the Basket for optimization of organization.



METAL SHELVES & DIVIDERS

These Metal Shelves are used to store larger or bulky items in the LogiCell® units. The shelf has a 2.5" H lip on the rear to prevent items from sliding back. The front slopes down 1" H to provide a labeling surface. The Metal Shelf can also be inserted in the reverse direction to retain items on the shelf in a slanted position. There are slots every 1" for attaching the Metal Divider to the Shelf. Items ending in a C have an added channel across the rear and front that accepts Catheter Slides.



CATHETER SLIDES

These LogiCell Catheter Slides are used to store catheters contained in pouches. The rack pulls out of the cabinet for easy access. The front plate of each Catheter Slide has a 3" x 5" Label Holder for improved organization. Catheter Slides can be attached to the ceiling of a LogiCell Cart/Cabinet, or below a Metal Shelf.



LOGICELL® ACCESSORIES (CONTINUED)

LABEL HOLDERS

The LH3 3-Inch Label Holder is attached by a strap which is wrapped around a horizontal wire of the Wire Basket and therefore can be placed in various locations across the front of the Wire Basket.

The LH13 Label Holders are mounted by sliding on the full width of the top edge of the Wire Basket or Clear Tub. The clear labeling area is folded over itself to create a protected space for the Label to slide into.



LOCKABLE DRAWERS

Lockable Drawers are on full-extension slides and are used to store supplies in LogiCell® units. A top to enclose the drawer and a surface that engages with the lock are included.

WARRANTY INFORMATION

LogiQuip products are covered by a Limited 5-Year Warranty from date of receipt against defect in materials or workmanship under normal use and service, excluding Electronic Components, Cart Covers, Custom Products, and LogiCell Tambour Doors. During this period, LogiQuip will, in its sole discretion, repair defects in materials or workmanship that existed when the product was received or replace the product. Visit [LogiQuip.com/Warranty](https://www.logiquip.com/Warranty) for more details.

ABOUT US

From quality products and services to patented, industry-leading innovations, LogiQuip has been providing smart, future-focused solutions exclusively to the healthcare industry since 1992. Our knowledgeable representatives partner with you to understand your needs, then design and implement the best solution for any space in your facility. With a focus on infection control, lean processes and ROI justification, our extensive line of products and services will help make your facility more effective and efficient now and for years to come.

QUICK START

Scan this QR Code with your Smart Phone to access on-line Quick Start Guide.

