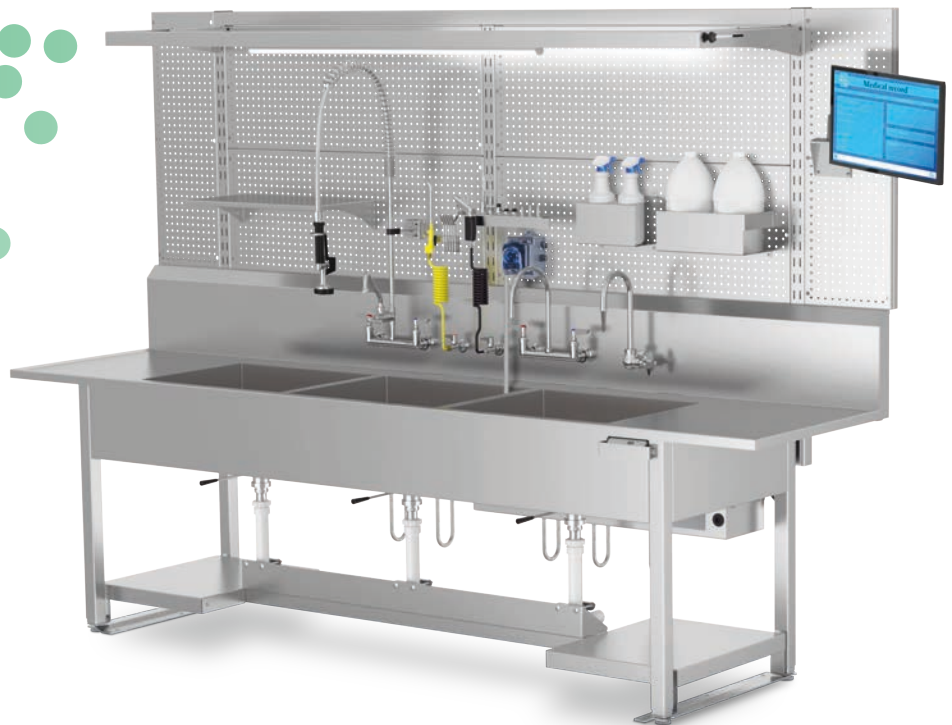
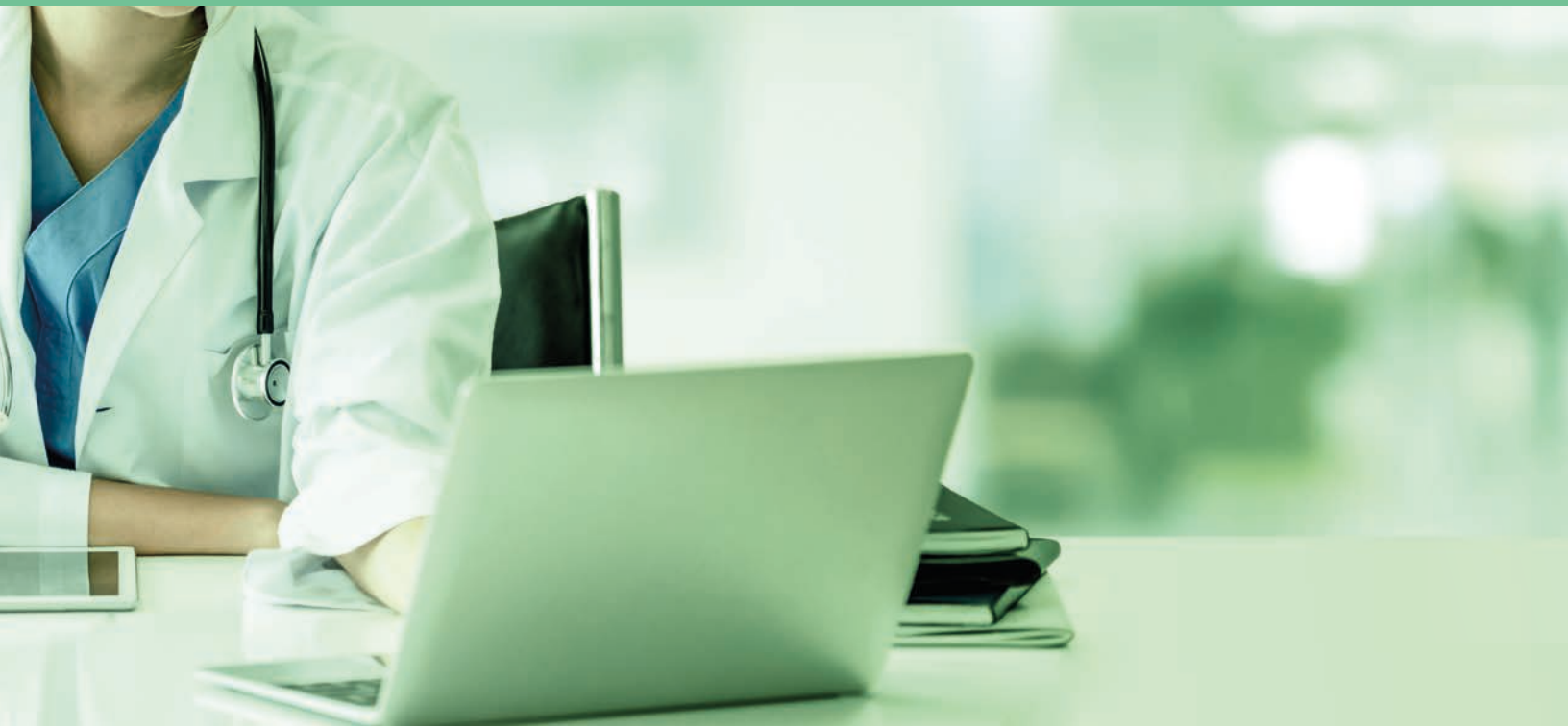




# Decontamination SINKS



# WHY LOGIQUIP®?



Healthcare exclusive since 1992, LogiQuip's **Inventory Management Solutions** are designed for Healthcare Professionals looking for a better way to manage supply chain tasks. With **Expert Advice**, **Innovative Solutions**, and **360° Service** that doesn't stop after the sale, LogiQuip's sole purpose is to ensure Healthcare Professionals have the supplies they need when they need them. Partnering with you to design and implement the right solutions, we give you time back to focus on what's important, Patient Care.

## **EXPERT ADVICE**

With an in-depth understanding of the industry and a focus on **Infection Control** and **Lean Processes**, we partner with you to ensure we design the right solutions for you.

## **INNOVATIVE SOLUTIONS**

Designed with an eye on the horizon, LogiQuip has **Innovative Solutions** that evolve with your facility. Our flexible and efficient options help to ensure you have the supplies you need when you need them.

## **360° SERVICE**

LogiQuip's experienced **Sales Representatives** and **Award-Winning Customer Support Team** provide unparalleled service before, during, and after the sale.



# LET US DO THE HEAVY LIFTING

WITH LABOR SHORTAGES AND THE EVER-INCREASING DEMAND TO DO MORE WITH LESS, the **LogiQuip Services Team** can help to decrease that burden with turnkey solutions to help ensure you have the supplies you need when you need them.

## PROJECT MANAGEMENT

From our initial meeting with you through implementation, a LogiQuip **Services Team Member** will be assigned as your **Project Manager**, working with you every step of the way. Your **Project Manager** will serve as your single point of contact during the project life cycle. Together we will develop and implement project milestones until the work is complete. Contact your **Sales Representative** or call **(800) 665-3760** for more information.

## ON-SITE ANALYSIS

Working with your LogiQuip **Representative**, an on-site analysis will be done to ensure that the **Project Manager** has a complete understanding of your current environment. During our on-site analysis we will review your current state, identify gaps, and align on the goals of the project.

## PLANNING

Using a mix of innovative products, Lean principles, tried and true methods, and out of the box thinking, LogiQuip will provide a holistic plan with turnkey solutions to minimize downtime while decreasing your storage footprint and increasing PAR levels.

## INSTALLATION & CONVERSION

LogiQuip is dedicated to providing on-time delivery, efficient installation, and supply conversion to minimize down time and time on site to get you up and running as quickly as possible.

## ONGOING SUPPORT

With the project complete, we want to help you sustain the changes that have been made. With **Annual Inventory Reviews**, **Preventative Maintenance Plans**, and **Field Service** for in warranty and out of warranty repairs, we have you covered to keep things running smoothly.

# LOGIQUIP® DECONTAMINATION SINKS

LogiQuip's **NEWLY REDESIGNED Decontamination Sinks** are more ergonomic than ever! NOW offering four (4) **Height Adjustable Options** that adjust with the press of a button, our **Decontamination Sinks** now come standard with 20" long **Basins**, a 12" **Backsplash** that allows for a **Universal Workflow**, **Marine Edge Countertops**, and **Basins** that are positioned closer to the user for less reaching. Add the optional **Pegboard Backframe and Accessories**, including **Overhead LED Lighting**, to create an ergonomic and efficient workspace.

## HEIGHT ADJUSTABLE

Easily raise and lower with the push of a button. Our **Electronic Height Adjustable Decontamination Sink** adjusts from 35" to 42" high, providing an ergonomic workspace for any user. **Fixed Height** options are also available.

## 300 SERIES STAINLESS STEEL

LogiQuip **Decontamination Sinks** are **300 Series Stainless Steel** making them durable, easy-to-clean\* and corrosion-resistant. All welded construction creates virtually seamless connection points that minimize cracks and crevices where germs can hide.

## ACCESSORIES

Several additional options including **Pegboard Backframe and Accessories**, **Overhead LED Lighting**, **Eye Wash**, **Dosing Soap Pumps**, and **Foot Operated Drains** allow you to customize our **Decontamination Sinks** to your specific needs.

## UNIVERSAL WORKFLOW

**Faucets** and **Water** and **Air Guns** are mounted to the 12" **Backsplash** with openings over each **Basin**. This allows you to connect and move the **Faucets** and **Guns** to create the workflow you need. **Hole Caps** are provided to cover openings that are not used.

## LIMITED 5-YEAR WARRANTY

LogiQuip products are covered by a **Limited 5-Year Warranty** from date of receipt against defect in materials or workmanship under normal use and service, excluding **Electronic Components**, **Cart Covers**, **Custom Products**, **LogiCell Tambour Doors**, **Label Holders**, and **Casters**. During this period, LogiQuip will, in its sole discretion, repair defects in materials or workmanship that existed when the product was received or replace the product. Visit [LogiQuip.com/Warranty](https://LogiQuip.com/Warranty) for more details.

## 24-INCH BASINS

LogiQuip **Decontamination Sinks** come standard with 24" wide and 20" long **Basins** to give more space for cleaning instruments. Available in **Single**, **Double**, and **Triple Basin** configuration, each **Basin** has **Etched Gallon Marks** to help ensure precise chemical dilution to safe and effective cleaning. 30" wide **Basins** are also available as an option.



MODEL #  
LQDSF3012035

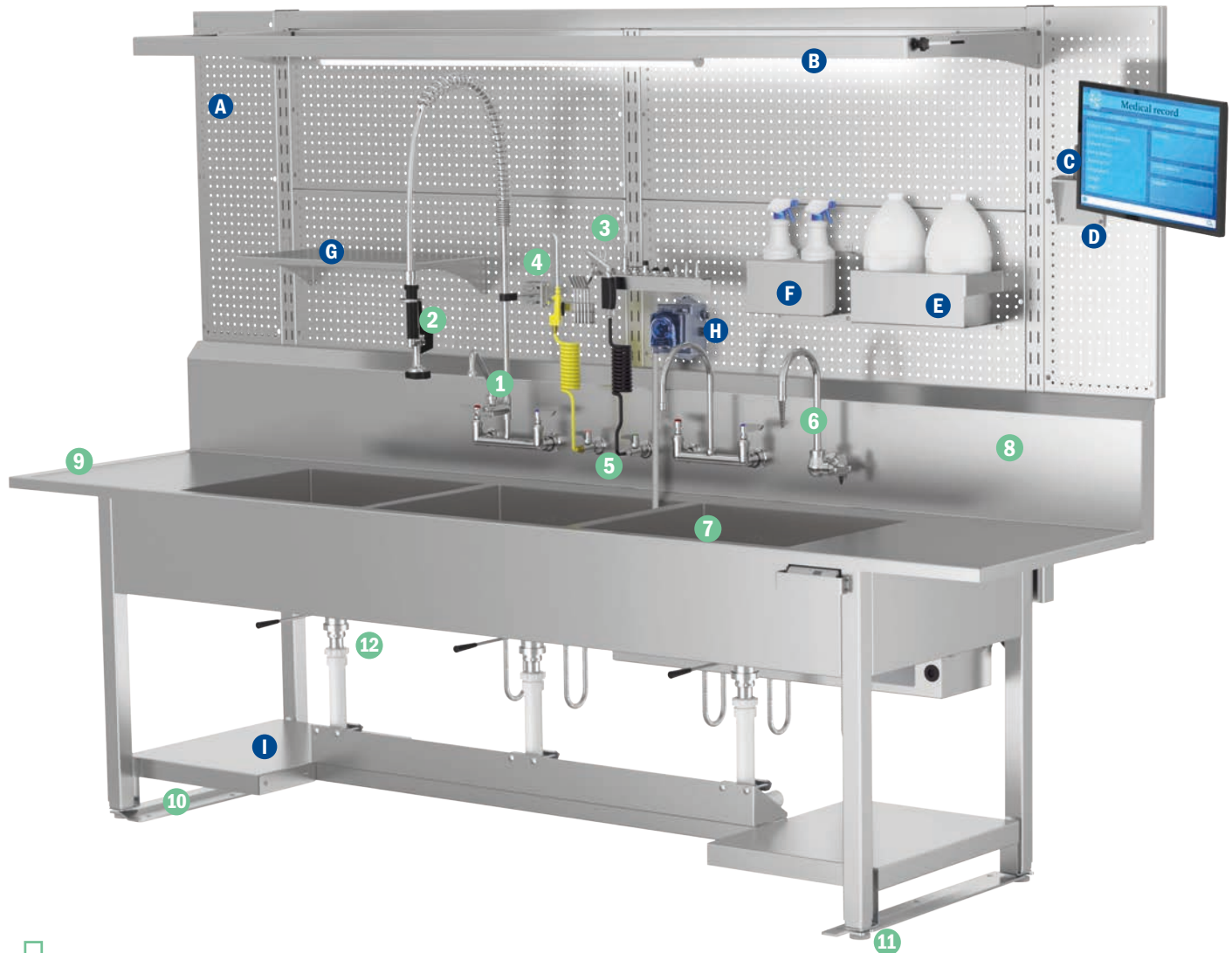
\*See the LogiQuip Cleaning Guide for cleaning instructions.



# STANDARD FEATURES & OPTIONS

## STANDARD FEATURES

- 1 Mixing Valve Faucet(s)
- 2 Pre-Rinse Faucet(s)
- 3 Water Gun Kit (8 Tips)
- 4 Air Gun Kit (5 Tips)
- 5 Shut Off Valve for Air/Water Guns
- 6 Deionized (DI) Water Faucet
- 7 Etched Gallon Marks
- 8 12-Inch Backsplash
- 9 Marine Edge Worksurfaces
- 10 Seismic Bracing
- 11 Adjustable Feet
- 12 Lever Handle Drains



## OPTIONS

- A Pegboard Backframe
- B Overhead Lights
- C Monitor Arm
- D Monitor Mount (holds up to 24" monitor)
- E Stainless Steel Jug Holder
- F Stainless Steel Spray Bottle Holder
- G Stainless Steel Shelf
- H Dosing Soap Pumps
- I H-Brace with Lower Shelf
- Large Basins 20" x 30" x 10"
- Foot Operated Drains
- Side Splashes
- Eye Wash
- Sonic Sinks
- Copper Drain System
- Bin Rail

# FIXED HEIGHT MODELS

## FIXED HEIGHT DECONTAMINATION SINKS

LogiQuip® offers four (4) Fixed Height Decontamination Sinks with either Single, Double, or Triple Basin Sinks that have a fixed height of 37".

FIXED HEIGHT DECONTAMINATION SINKS — FEATURES & MODELS

FEATURES	LQDSF307237 Single Basin Sink 30" x 72" x 37"	LQDSF309637D Double Basin Sink 30" x 96" x 37"	LQDSF309637T Triple Basin Sink* 30" x 96" x 37"	LQDSF3012037 Triple Basin Sink 30" x 120" x 37"
Mixing Valve Faucet(s)	1	2	2	2
Pre-Rinse Faucet(s)	1	2	2	2
Water Gun Kit (8 Tips)	✓	✓	✓	✓
Air Gun Kit (5 Tips)	✓	✓	✓	✓
Basin Size 20" x 24" x 10"	1	2	3	3
Etched Gallon Marks	✓	✓	✓	✓
12-Inch Backsplash	✓	✓	✓	✓
Wrap Around Apron	✓	✓	✓	✓
Open Pipe Base	✓	✓	✓	✓
Lever Handle Drains	1	2	3	3
Adjustable Feet	✓	✓	✓	✓
Seismic Bracing	✓	✓	✓	✓

\*96" Wide Triple Basin Sinks have less counterspace than 120" Wide Triple Basin Sinks.



MODEL #  
LQDSF309637D

# ADJUSTABLE HEIGHT MODELS



## ADJUSTABLE HEIGHT (ELECTRIC) DECONTAMINATION SINKS

LogiQuip® offers four (4) Adjustable Height models with either **Single, Double, or Triple Basin Sinks** that can be raised and lowered from 35" to 42" high with the electronic controls.

ADJUSTABLE HEIGHT DECONTAMINATION SINKS – FEATURES & MODELS				
FEATURES	LQDSA307235 Single Basin Sink 30" x 72" x 35-42"	LQDSA309635D Double Basin Sink 30" x 96" x 35-42"	LQDSA309635T Triple Basin Sink* 30" x 96" x 35-42"	LQDSA3012035 Triple Basin Sink 30" x 120" x 35-42"
Mixing Valve Faucet(s)	1	2	2	2
Pre-Rinse Faucet(s)	1	2	2	2
Water Gun Kit (8 Tips)	✓	✓	✓	✓
Air Gun Kit (5 Tips)	✓	✓	✓	✓
Deionized (DI) Water Faucet	✓	✓	✓	✓
Basin Size 20" x 24" x 10"	1	2	3	3
Etched Gallon Marks	✓	✓	✓	✓
12-Inch Backsplash	✓	✓	✓	✓
Wrap Around Apron	✓	✓	✓	✓
Open Pipe Base	✓	✓	✓	✓
Lever Handle Drains	1	2	3	3
Adjustable Feet	✓	✓	✓	✓
Seismic Bracing	✓	✓	✓	✓

\*96" Wide Triple Basin Sinks have less counterspace than 120" Wide Triple Basin Sinks.



MODEL #  
LQDSA309635D



[www.logiquip.com](http://www.logiquip.com)

(800) 665-3760 | [customersupport@logiquip.net](mailto:customersupport@logiquip.net)

5.2023