

# Label HOLDERS

## GUIDE FOR LOGIQUIP PRODUCTS

LogiQuip's robust **Label Holder** offering provides an easy solution for labeling supplies. In addition to making it easier for Healthcare Professionals to quickly find the supplies they are looking for, they can also help to streamline restocking. With several options and colors available, we have the right solution for you.

### 3-INCH LABEL HOLDERS

Compatible with our **ParWire®**, **ParWall®**, **ParStor®**, **LogiCell®**, and **LQS Wire Shelving**, our variety of **3-Inch Label Holder** colors aid in color coding inventory, making supplies easier to find. These 1" W x 3" H **Label Holders** include a loop for attaching to **Shelves** or **Baskets**, come in bags of 50, and can be used on **ParWire Basket Shelving** and **LQS Shelving**. Choose from 10 colors; Blue, Red, Pink, Yellow, Orange, Green, Purple, Opaque, Black, and Bright White.



(Actual color may vary, depending on your monitor setting or press run.)

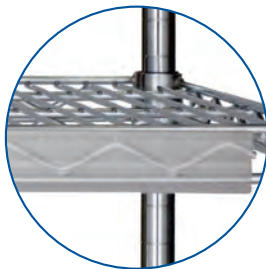


MODEL# LH3-BLUE

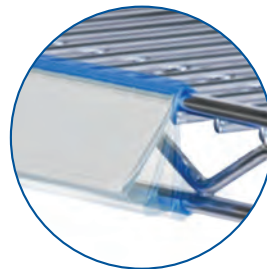
3-INCH LABEL HOLDERS	
MODEL	COLOR
LH3-BLUE	Blue
LH3-RED	Red
LH3-GREEN	Green
LH3-YELLOW	Yellow
LH3-PINK	Pink
LH3-ORANGE	Orange
LH3-PURPLE	Purple
LH3	Opaque
LH3-BLACK	Black
LH3-BRWHITE	Bright White
LH3-STONE	Stone
LH3-TEAL	Teal
LH3-DKPRPL	Dark Purple
LH3-BERRY	Berry

### 3-POSITION LABEL HOLDERS FOR LQS FLAT WIRE SHELVING

Wire Shelving **3-Position Label Holders** can be installed in three (3) positions; flat, a 10° angle or a 30° angle. These **Label Holders** have a clear front cover with either **Clear (CL)** or **Blue (BL)** color support.



Clear Label

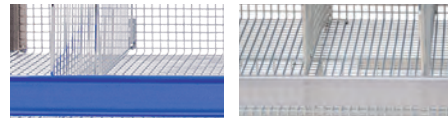


Blue Label - showing flat, 10° and 30°

3-POSITION LABEL HOLDERS		
BLUE	CLEAR	FOR SHELF WIDTH
LH03BL	LH03CL	3"
LH24BL	LH24CL	24"
LH30BL	LH30CL	30"
LH36BL	LH36CL	36"
LH42BL	LH42CL	42"
LH48BL	LH48CL	48"
LH54BL	LH54CL	54"
LH60BL	LH60CL	60"
LH72BL	LH72CL	72"

## PARWIRE® BASKET SHELVING

Label Holders for ParWall® and ParWire Basket Shelving are available in multiple sizes and two (2) colors; Clear (CL) or Blue (BL).



For ParWall, ParWire & LQS Baskets



For ParWire  
Glide Baskets

PARWALL LABEL HOLDERS		
BLUE	CLEAR	FOR SHELF WIDTH
LH18BLPW	LH18CLPW	18"
LH36BLPW	LH36CLPW	36"
LH48BLPW	LH48CLPW	48"

PARWIRE & LQS BASKET LABEL HOLDERS		
BLUE	CLEAR	FOR SHELF WIDTH
LH24BLPRSB	LH24CLPRSB	24"
LH36BLPRSB	LH36CLPRSB	36"
LH48BLPRSB	LH48CLPRSB	48"
LH60BLPRSB	LH60CLPRSB	60"

PARWIRE GLIDE BASKET LABEL HOLDERS		
BLUE	CLEAR	FOR SHELF WIDTH
LH36BLSO	LH36CLSO	36"
LH48BLSO	LH48CLSO	48"
LH60BLSO	LH60CLSO	60"

## LABEL HOLDERS FOR WATERFALL EDGE SHELVING

Waterfall Label Holders are available in three (3) sizes and have a clear front cover with either Clear (CL) or Blue (BL) color support.

WATERFALL EDGE SHELVING LABEL HOLDERS		
BLUE	CLEAR	FOR SHELF WIDTH
LH48BLWF	LH48CLWF	48"
LH60BLWF	LH60CLWF	60"
LH72BLWF	LH72CLWF	72"



Also available in  
Clear (CL)

## LABEL HOLDER FOR SUTURE SHELVES

Suture Shelf Label Holders are available in three sizes. Single-Sided Shelves will use one (1) Label Holder and Double-Sided Shelves will use two (2) Label Holders, one on each side.

SUTURE LABEL HOLDERS	
MODEL	FOR SHELF WIDTH
STRLH24BL	24"
STRLH36BL	36"
STRLH48BL	48"

