

## OVERVIEW

The LogiQuip scope cabinets provide safe and secure storage for a variety of scopes in an environment that supports infection control.

- Specially designed scope holders compliment the devices
- A continuously running fan maximizes air flow and reduces drying time
- A HEPA filter traps 99.97% of particulates .3 microns or larger to reduce the presence of bacteria
- A stainless steel, removable drip tray permits complete cleaning of the tray and the area around it.
- A padded rear wall protects devices from damage when loading and unloading them.
- Cord separators prevent devices from touching each other.

## INITIAL SET-UP WITH POSITIVE PRESSURE FAN AND HEPA FILTER

**01** Ensure fan is plugged in and running

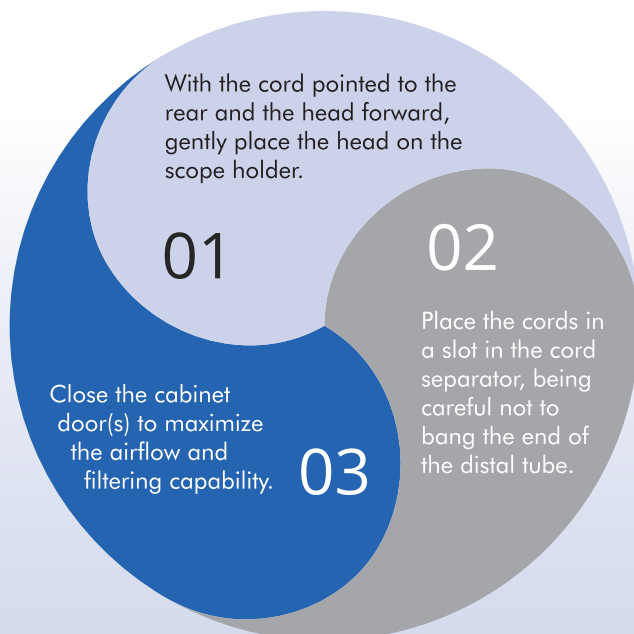
**02** Ensure the HEPA filter is completely in place to prevent air from moving around it. Note the triangle printed on the side indicated the direction of the air flow.



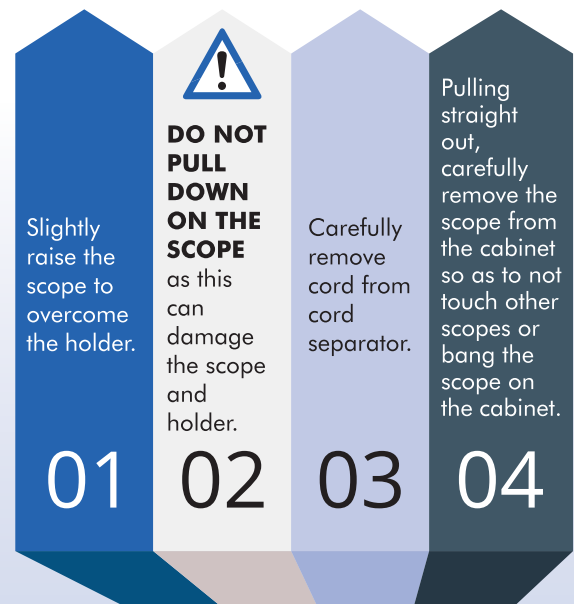
## USE

If equipped with a fan, it will run immediately upon plug-in, and run continuously.

### TO HANG SCOPES:



### TO REMOVE SCOPES



## LOCKING

LogiQuip scope cabinets may be equipped with a key lock or a keyless lock. For the keyless lock, please refer to the lock user guide.

## MAINTENANCE

Pull the filter straight out of the housing. Replace the HEPA filter when it becomes dirty. In most environments, replacing once a year should be acceptable. When replacing it, ensure the HEPA filter is completely in place to prevent air from moving around it. Note the triangle printed on the side indicated the direction of the air flow.

## CLEANING

### For laminate cabinets

Wiping the cabinet with a 10% bleach solution or soapy water is acceptable.

### For stainless steel cabinets

Isopropyl alcohol and bleach free disinfectants are suitable.



**DO NOT USE ABRASIVE CLEANERS OR PADS,  
OR THOSE CONTAINING AMONIA, BLEACH,  
CHLORIDE OR QUATERNARY SALTS.**

All parts of the cabinets can be cleaned, including the scope holders and cord separators. Check air inlets for the accumulation of dirt and clean if necessary.

LogiQuip cabinets are compatible with most typical cleaning procedures for patient areas. For more information, ask your representative for the LogiQuip Cleaning Guide.

LogiQuip has been in the healthcare storage and distribution systems business since 1992.

Our value-added services support the hospital clinician, logistics officer, purchaser and planner.

Because each hospital's inventory, supply, and storage requirements are diverse, our mission is to solve your specific storage and distribution issues. With "space" being one of the hospital's most expensive capital assets, our philosophy is to maximize storage efficiency while supporting infection control and functional ergonomics. Whether a single cart or a complete supply storage system, our experienced healthcare storage solutions adviser can offer a solution to your challenges.