

Lean Wall Installation Specifications

Wall Mount—On Finished Wall

Backing board must be of 3/4" or 7/8" fire-rated plywood or laminated melamine cut to the size specified on pages 2 - 4 which are determined by the size of the horizontal rails and vertical frames used to construct the Lean Wall solution. Sheet metal backing may be used if applicable.

Anchoring of the plywood/melamine to the wall is the responsibility of the facility. Typical anchoring requires wood and/or drywall screws attached through the plywood/melamine into existing studs on 16" centers. For a full height system, 74"H, 10 screws are recommended per stud. Plywood/melamine should be positioned on the wall 10" above the floor, above standard height electrical outlets, and centered to the desired location.

Plywood and sheet metal must be painted by the facility to match the adjacent wall prior to the installation of the Lean Wall system. In sterile areas, only laminated melamine or sheet metal should be used.

Horizontal rails are typically attached to the plywood/melamine by LogiQuip. Typical anchoring uses 1" long, #6 hex-head wood screws through predrilled holes in the horizontal rails. One screw will need to be placed in the outermost, full mounting slots in each horizontal rail. On rails 36" or longer, one screw should also be placed in the center mounting slot of the rail. Horizontal rails will need one additional screw placed behind each vertical frame and one screw on either side of the vertical frame. Each vertical frame will need a single screw placed in the set screw hole located behind the lowermost slot.

Baskets are mounted to the Lean Wall vertical frames using either standard (PWBRACKET) or slanted (PWBRACKETSLT) brackets.



P.O. Box 278

Galesburg, MI 49053

www.logiquip.com | customersupport@logiquip.net

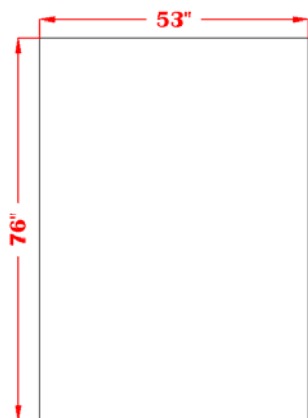
Phone (800) 665-3760

Fax: (888) 965-3984

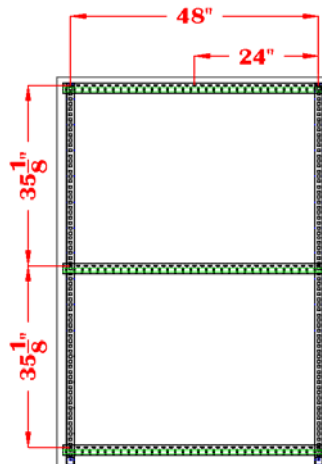
Par Wall® Lean Wall Installation Specifications

48 x 74 Starter Unit

Required Backing Dimension

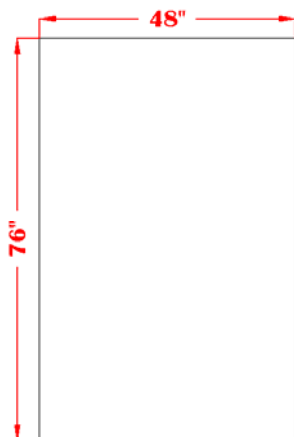


Mounting Screw Positions

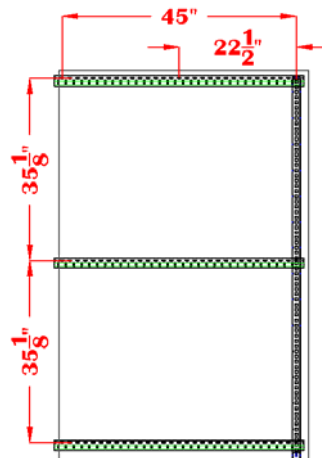


48 x 74 Add-on Unit

Required Backing Dimension



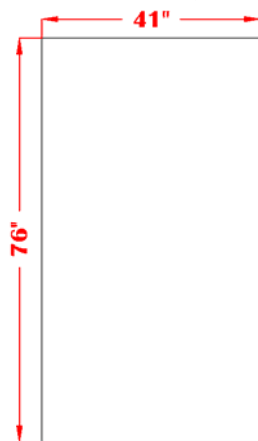
Mounting Screw Positions



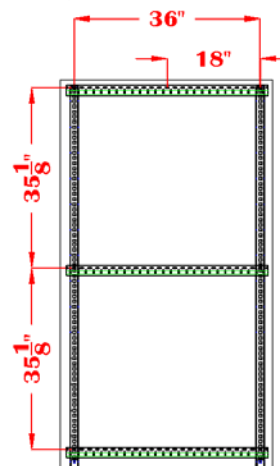
Par Wall® Lean Wall Installation Specifications

36 x 74 Starter Unit

Required Backing Dimension

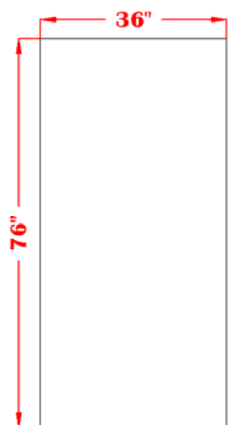


Mounting Screw Positions

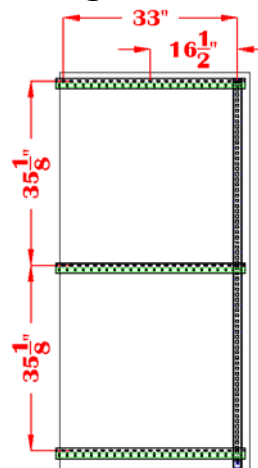


36 x 74 Add-on Unit

Required Backing Dimension



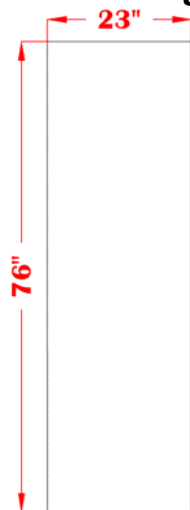
Mounting Screw Positions



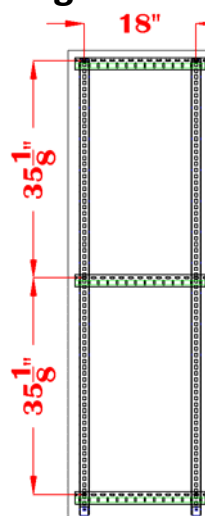
Par Wall® Lean Wall Installation Specifications

18 x 74 Starter Unit

Required Backing Dimension

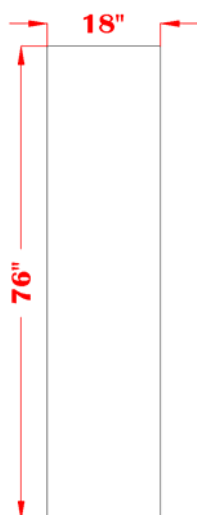


Mounting Screw Positions



18 x 74 Add-on Unit

Required Backing Dimension



Mounting Screw Positions

